

Contents

The Site and Surrounds	7
Location Map	7
An Overview of the Approved Development	8
Site Statistics	8
Operations	9
Hours of use	9
Number of Staff	9
Proposed use of Demountable Buildings	9
Site Master Landscape Plan	10
Arrahman College Growth Summary	10
PROPOSED STAGED DEVELOPMENTS	11
STAGE 1 CONSTRUCTION MANAGEMENT PLAN:	11
Stage 1 Available Facilities:	11
Stage 1 Sport and Recreational Facilities:	13
Management of Stage 1 construction works	13
STAGE 1 GROWTH PLAN	14
2022 Calendar Year	14
2023 Calendar Year	14
STAGE 1A CONSTRUCTION MANAGEMENT PLAN:	14
Stage 1A Available Facilities:	14
Stage 1A Sport and Recreational Facilities:	16
Management of Stage 1A construction works	17
STAGE 1A GROWTH PLAN	17
2024 Calendar Year	17
2025 Calendar Year	17
2026 Calendar Year	17
2027 Calendar Year	18
2028 Calendar Year	18
STAGE 2 CONSTRUCTION MANAGEMENT PLAN:	18
Stage 2 Available Facilities:	18
Stage 2 Sport and Recreational Facilities:	21
Management of Stage 2 construction works	21
STAGE 2 GROWTH PLAN	21
2029 Calendar Year	21
2030 Calendar Year	22
STAGE 3 CONSTRUCTION MANAGEMENT PLAN:	22
Stage 3 Available Facilities:	22
Stage 3 Sport and Recreational Facilities:	24

Management of Stage 3 construction works and decommissioning of the demountable buildings	25
STAGE 3 GROWTH PLAN	25
2031 Calendar Year	25
STAGE 4 CONSTRUCTION MANAGEMENT PLAN:	26
Stage 4 Available Facilities:	26
Stage 4 Sport and Recreational Facilities:	29
Management of Stage 4 construction works and decommissioning of the demountable buildings	29
STAGE 4 GROWTH PLAN	29
2032 Calendar Year	29
2033 Calendar Year	29
Sample Primary College Timetable:	30
Proposed Primary College Class Composition:	30
Sample Secondary Timetable:	31
Secondary College Class Composition:	31
Management of Student Movement	32
Management of College Construction, Renovations and/or Upgrades	34

ARRAHMAN COLLEGE INTERIM MANAGEMENT PLAN DURING CONSTRUCTION

Introduction

This plan outlines the interim management of staged construction works during the initial growth stages of Arrahman College; located at 95-105 Seventeenth Avenue, Austral. This document has been prepared for the Sydney Western City Planning Panel (SWCPP) and Liverpool City Council.

Liverpool Council Reference: DA-616/2016A

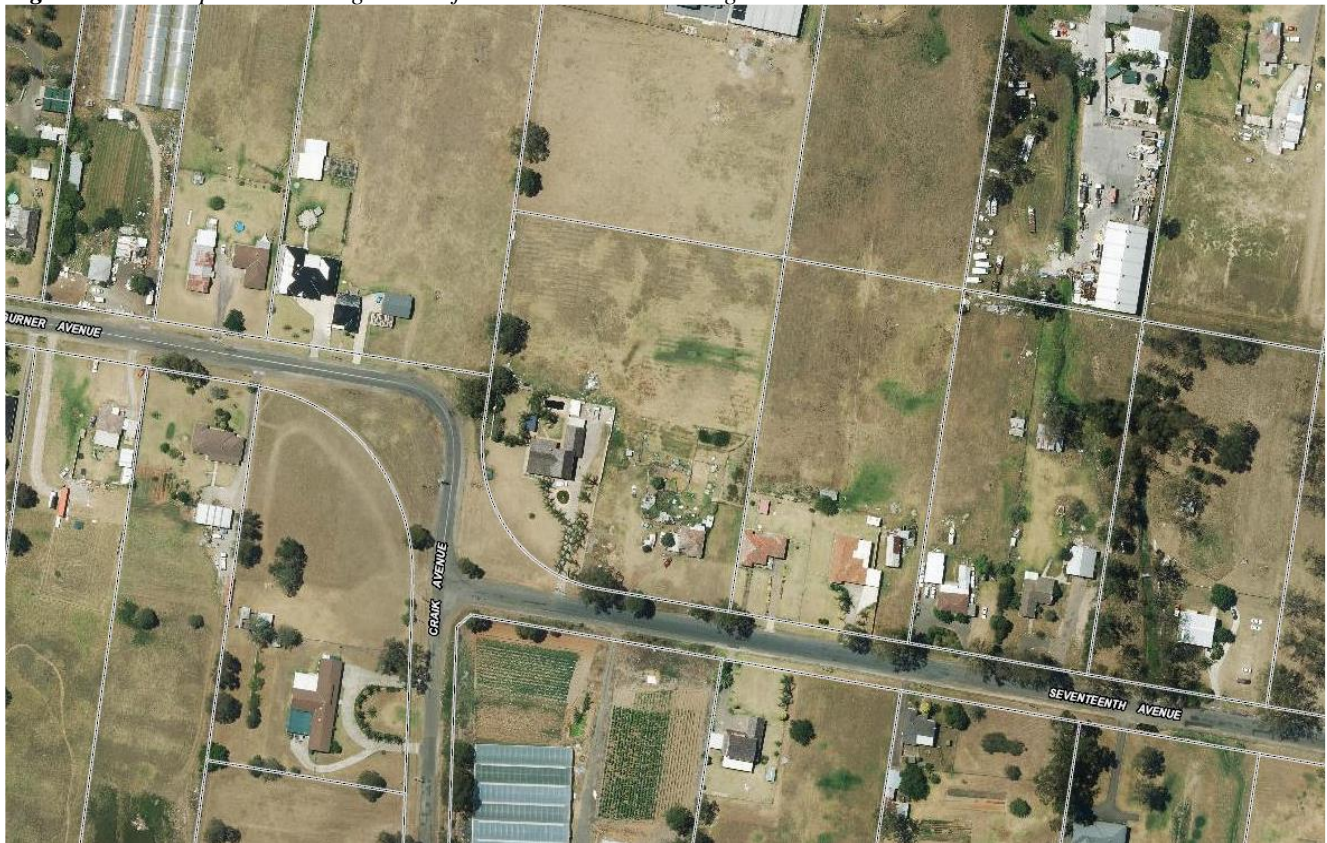
Sydney Western City Planning Panel (SWCPP) Reference: PPSSWC-84

The Site and Surrounds

The site is known as 95-105 Seventeenth Avenue, Austral being legally described as Lot 221 within DP651079 and has a total area of 17,515m². The subject site is located on the northern side of Seventeenth Avenue and the western side of the property has a western frontage to the corner of Craik and Gurner Avenue (*refer to figure 1*). The subject site is irregular in shape with a curved boundary in the south-west corner. The site experiences gradual south-west to northeast fall of approximately 8.18 metres with the south-west corner of the site having an RL of 77.45 and the northeast of the site having an RL of 69.27.

Location Map

Figure 1: Aerial photo showing the subject site and surrounding land.



An Overview of the Approved Development

The approval is for a staged development of a school providing for Kindergarten - Year 12 for approximately 800 students. The development involves the demolition of the existing buildings on the site and the construction of several separate buildings; including temporary demountable buildings, used as classrooms, a separate administration building, an assembly building, external play areas, car parking areas accessed from Seventeenth Avenue and associated landscaping. The school buildings have been sufficiently set back from the frontage of the site to Seventeenth Avenue and the corner of Craik and Gurner Avenue. Separation has also been provided from the adjoining property boundaries to accommodate landscaping.

The Approval includes:

- Demolition of two (2) existing dwellings and associated outbuildings on the site.
- Removal of trees and shrubs located centrally on the site.
- Staged development of a school providing for kindergarten – Year 12 for up to 800 students to be achieved by 2033 (*estimated*).
- Construction of 7 temporary demountable buildings, a canteen and amenities block
- Construction of an Administration building.
- Construction of two x 2 storey buildings associated with the primary school (Kindergarten – Year 6) in the North-West corner of the site and three x 2 storey buildings associated with the Secondary school in the south-eastern corner of the site.
- Construction of a school assembly building.
- Provision of 58 car parking spaces for staff and visitors.
- Provision of a 16-bay pick-up/drop –off area
- Provision of a 3-bay bus parking area.
- Entry and egress to the car park from Seventeenth Avenue.
- Provision for external play areas.
- Before and after school services for up to 40 school-aged children.

Site Statistics

KEY SITE STATISTICS			
Site	17,515m ²	Staff parking spaces	43
Total	4,880m ²	Visitor parking	15
FSR	0,27:1	Pick up/ drop off	15
Landsc area	950m ²	Bus bays	3
Max height	8m		

Operations

Hours of use

The proposed Development Application consists of the following:

1. To establish a school with a maximum student capacity of (800) students;
2. Use of proposed new school buildings and amenities as a teaching facility to accommodate all of the proposed 800 students;
3. Use of educational establishment for teaching on:

Monday to Friday from 7 am to 6 pm

Saturdays 7 am to 9 pm (*30 Saturdays per Calendar Year*)

Sundays 7 am to 9 pm (*30 Sundays per Calendar Year*)

4. The addition approved use by the Sydney Western City Planning Panel also allows:

124. The use of the school is limited to the following hours of operation:

(a) 7:00am – 6:00pm Monday to Friday, with the exception of two days per week Monday to Friday in which the operating hours extend to 9pm.

(b) 7:00am – 9:00pm for a maximum of thirty (30) Saturdays per calendar year; and

(c) 7.00am-7.00pm on Sundays and/or public holidays, for a maximum of thirty (30) Sundays per calendar year.

The proposed extended hours are primarily to allow for preparation classes for students in Years 3, 5, 7 and 9 for the National Assessment Program - Literacy and Numeracy (NAPLAN) and students in Year 12 for the Higher School Certificate. The proposed hours are considered reasonable for operating within the residential area and are similar to other non-residential uses within the surrounding area.

Number of Staff

The estimated number of staff is 45 which includes all teaching staff, operations staff, administration and general support staff.

Proposed use of Demountable Buildings

Stage 1: The demountables will be used as general classrooms for years Kindergarten to Year 5.

Stage 1A: The demountables may be used as general classrooms and/or additional learning spaces e.g. specialty lab, learning support, conversion into a larger library area, or used as a general meeting area/ indoor open learning space.

Stage 2: The demountables may be used as general classrooms and/or additional learning spaces e.g. specialty lab, learning support, conversion into a larger library area, or used as a general meeting area/ indoor open learning space.

Stage 3: The demountables are dismantled and replaced with an assembly/ gymnasium hall.

Stage 4: *Not Applicable*

Site Master Landscape Plan

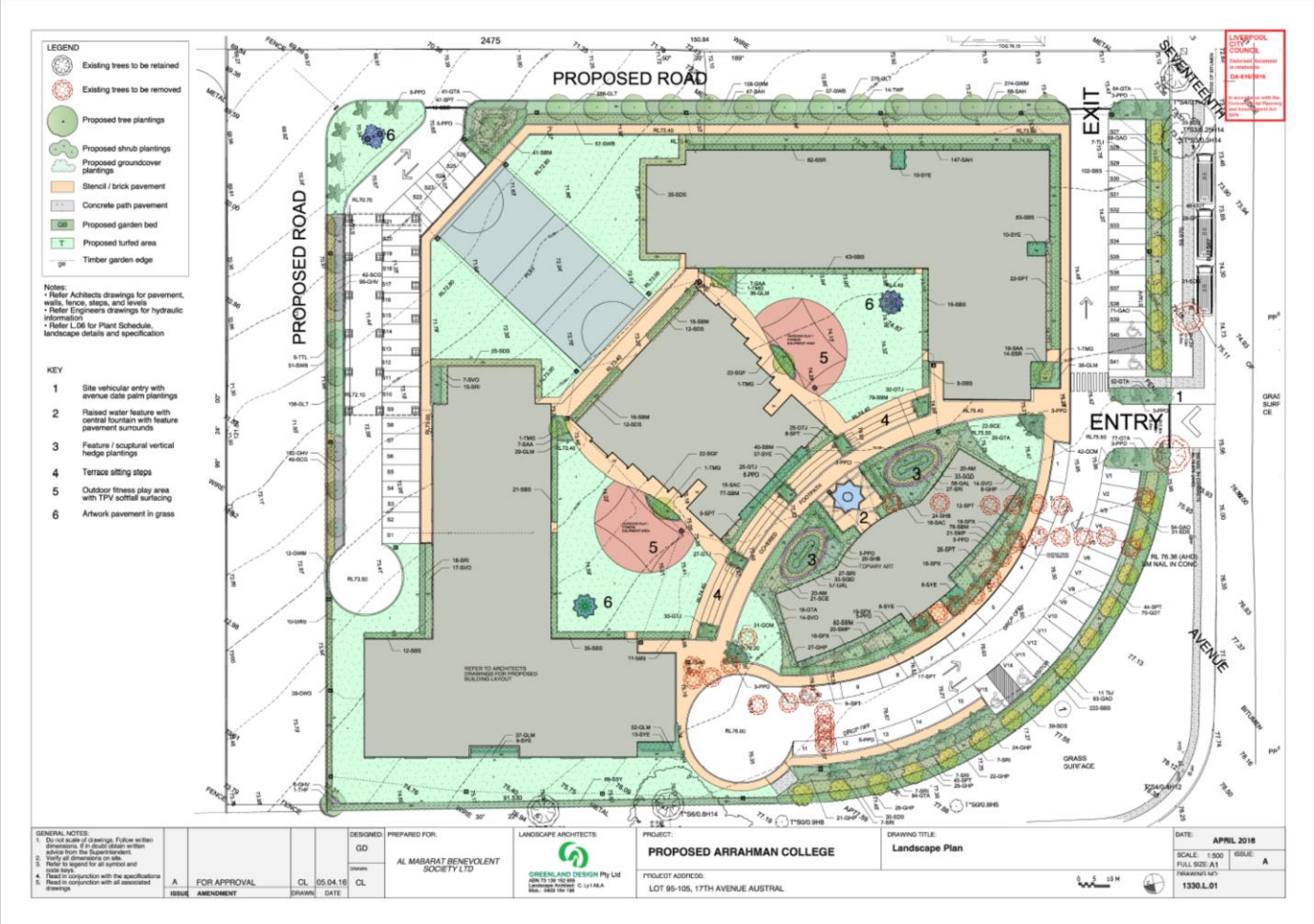


Figure 2 – Site Landacape Plan prepared by Greenland Design

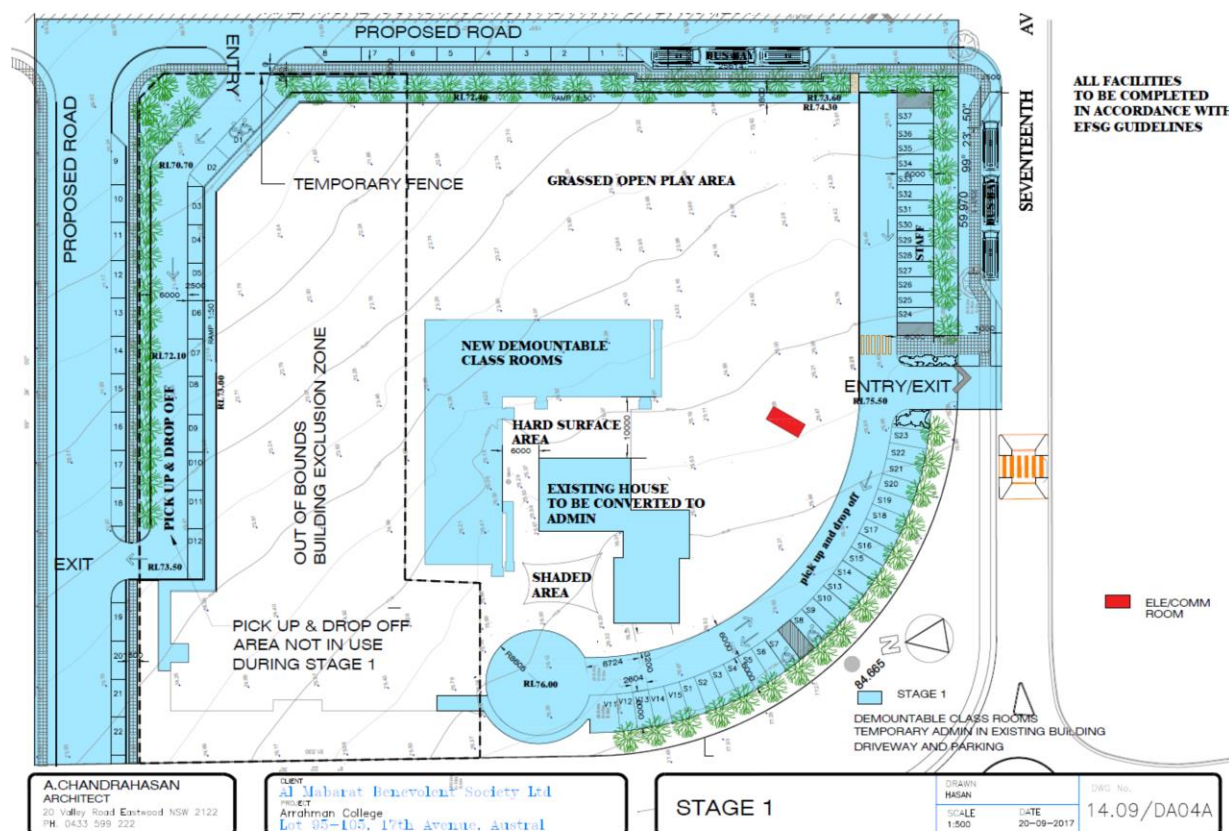
Arrahman College Growth Summary

Year	Projected Number of Students	Projected Number of Staff	Proposed Number of Classes (based on 25 students per class)
2022	75	6	3
2023	100	8	4
2024	150	11	6
2025	225	15	9
2026	300	20	12
2027	375	25	15
2028	450	30	18
2029	525	33	21
2030	600	36	24
2031	675	39	27
2032	750	42	30
2033	800	45	32

PROPOSED STAGED DEVELOPMENTS

STAGE 1 CONSTRUCTION MANAGEMENT PLAN:

- Construction of all internal roads and driveways including the pickup and drop off zones as well as the external bus bays.
- Construction on onsite staff parking
- Construction of rear pick up and drop off zone for use in future stage developments
- Conversion of the existing property into a school administration block.
- Construction of 7 temporary demountable buildings, a canteen and amenities block.
- **STAGE 1 CONSTRUCTION COMPLETION ESTIMATED BY MARCH 2021**



Stage 1 Available Facilities:

The following facilities will be made available during stage 1 as per the Educational Facilities Standard Guidelines. Please note that all facilities must meet the appropriate level of standards for Arrahman College to maintain its school registration with the NESA. Arrahman College will not be eligible for school registration by NESA if the facilities available are incompliant with the relevant education building standards.

The currently proposed facilities will meet NESA's expectations as well as the requirements of the Educational Facilities Standard Guidelines.

- Junior College Library & Multipurpose ICT LAB- The Primary School library will contain modern seating which encourages private reading and small group activities related to the library. Weekly library lessons will be run for the infants and primary students in which they learn about how to make use of the library resources, as well as being read to, or carry out work that is relevant to their classwork. Students will have access to quality literature including PRC shortlisted titles. The library will also be used to run infant' Arabic classes as part of our streaming levels. Students will also be able to enjoy the library at recess and lunch where they can read, play games such as chess, and be read to by the librarian. The library will also run the PRC competition and puts shortlisted books on display and reserve for students to access.
- The school will also use this space as a Computer Lab. The Computer Lab/ Library will be equipped with an interactive smart board, internet and a class set of computers. The Lab will also be equipped with special programs and allow for interactive learning experiences which enhance the lessons and deepen student knowledge and understanding of concepts. The ICT lab will also provide students with access to digital technologies such as Bee bots and Edu bots.
- 7 general demountable classrooms: All classrooms will be fitted with educational features to facilitate teaching and learning activities. These include a general whiteboard and an interactive whiteboard in each classroom. Each room will have seating for 30 students, a teacher desk, bookshelves, and work tray holders for each student in the class.
- Counsellors Office (Shared): The College will include one specially designated space for students to visit the counsellor and participate in one on one activities. This space will not be shared whilst the counsellor is in consultation with students.
- Administration Office with Sick Bay Facilities
- A server/Photocopy room
- Principal's Office
- Staffroom
- Uniform Shop
- Staff toilets- located within the administration building and demountable buildings
- Ramp for Disability Access
- Toilet Facilities- *including 2 accessible toilets (Demountable)*

- 1 Multipurpose hall (indoor space): The school will have an open space which is used for many activities. These include conducting the afternoon prayer, sports activities such as gymnastics, assemblies, and incursions.
- School Canteen
- Local Computer network
- Wireless internet access

Stage 1 Sport and Recreational Facilities:

- Sheltered Courtyard
- Dedicated outdoor recreational areas, (grass area)
- Dedicated outdoor recreational area, (concrete)
- Multipurpose hall
- Indoor Library
- Local council parks/ playing fields

Management of Stage 1 construction works

- The expectation of all staff supervision requirements during all staged construction works will be identified within all staff policies and procedures.
- The expectations of students during stages of construction will be identified within all school rules, including the appropriate disciplinary action.
- Stage 1A construction area will be fenced off and marked as an exclusion zone to ensure the safety of students, staff and the general community.
- Any major demolition works will be planned, where possible, outside hours of school operation and/or during school holidays. *(All works will be completed during local council permissible hours).*
- Staff supervision will be available in all playground areas during recess and lunchtime to ensure the safety of students.
- Staff supervision will be available before and after school to ensure the safety of student movement and assist in the flow and management of traffic; insuring minimal disturbances to residents.
- **Note: The rear pickup and drop off area will be included in the exclusion zone as this will not be needed for stage 1. The pickup and drop off area was completed with the initial civil works to cater for future stage developments. This area will be accessible following the completion of stage 1A.**

STAGE 1 GROWTH PLAN

2022 Calendar Year

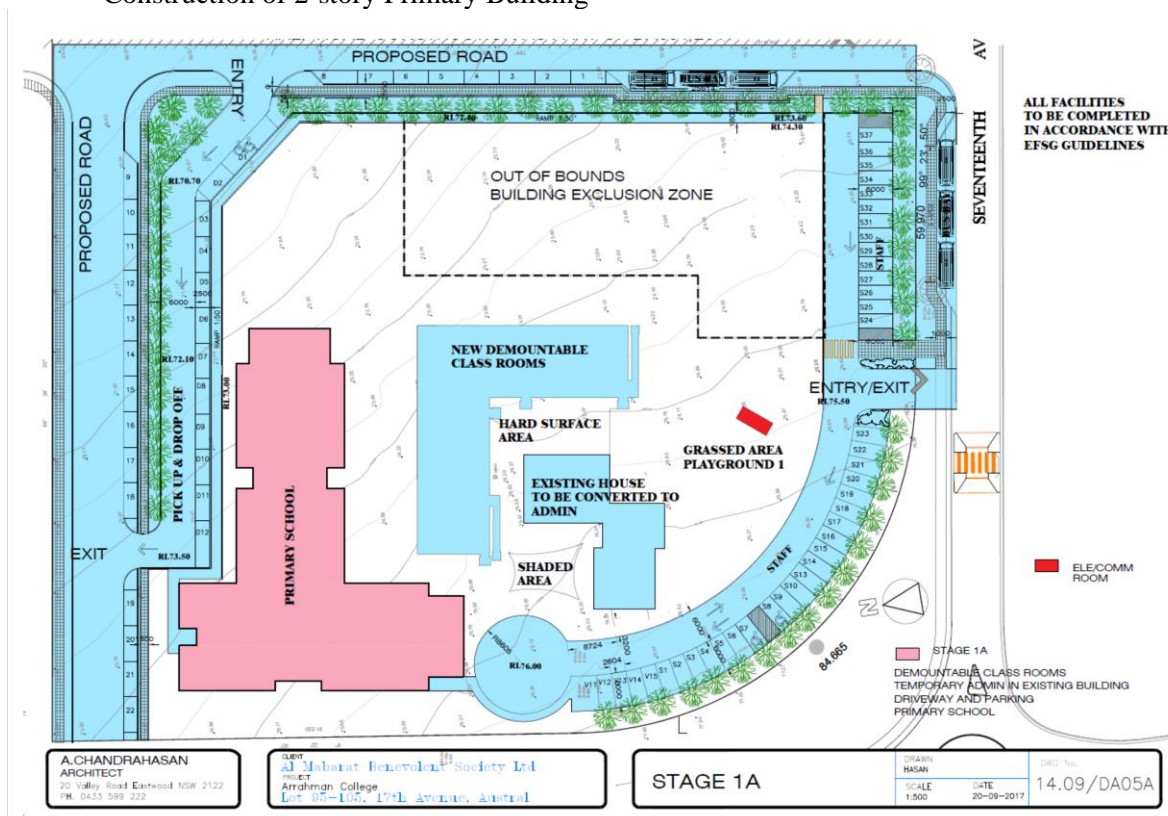
- Arrahman College commences operations
- School open for Kindergarten to Year 2 students
- Estimated 75 Students (*3 classes of 25 students*)
- Estimated 6 Staff (*including operations and administration*)

2023 Calendar Year

- School open to Year 3 students
- Estimated additional 25 students (100 students total – *4 classes of 25 students*)
- Estimated 8 Staff (*including operations and administration*)
- Estimated OOSH (Outside School Hours Care) facilities for up to 40 students commences operation

STAGE 1A CONSTRUCTION MANAGEMENT PLAN:

- Construction of 2-story Primary Building



Stage 1A Available Facilities:

The following facilities will be made available during stage 1A as per the Educational Facilities Standard Guidelines. Please note that all facilities must meet the appropriate level of standards for Arrahman

College to maintain its school registration with the NESAs. Arrahman College will not be eligible for school registration by NESAs if the facilities available are non-compliant with the relevant education building standards.

The currently proposed facilities will meet NESAs' expectations as well as the requirements of the Educational Facilities Standard Guidelines, EFSG.

- All of the Stage 1 facilities will remain until the completion of Stage 1A.
- Permanent Primary Building- The primary building will include;
 - 19 general-purpose classrooms
 - An Early Years learning library
 - 2 Science and Technology Labs
 - 3 ICT Labs - *The ICT lab will also provide students with access to digital technologies such as Bee bots and Edu bots.*
 - 4 Multi-purpose rooms (Maker Space)
 - Staffroom and additional staff office space
 - 1 Visual Arts Lab
 - 1 Music Lab
 - General storeroom
 - Wheelchair accessible ramps
 - Lifts
 - Student Toilets, *including accessible toilets.*

Note that the Primary Building will also facilitate the appropriate requirements to run Secondary courses whilst the College supports student growth and the completion of stage 2 construction. Changes to furnishings will be required in some classrooms of the permanent primary building to meet the EFSG guidelines/ Secondary education requirements.

- College Library- The Primary School library will contain modern seating which encourages private reading and small group activities related to the library.
- 7 general demountable classrooms: All classrooms will be fitted with educational features to facilitate teaching and learning activities. These include a whiteboard and an interactive whiteboard in each classroom. Each room will have seating for 30 students, a teacher desk, bookshelves, and work tray holders for each student in the class.
- **The demountables may be used as general classrooms and/or additional learning spaces e.g. specialty lab, learning support, conversion into a larger library area, or used as a general meeting area/ indoor open space learning.**

- Counsellors Office (Shared): The College will include one specially designated space for students to visit the counsellor and participate in one on one activities. This space will not be shared whilst the counsellor is in consultation with students.
- Administration Office with Sick Bay Facilities
- A server/Photocopy room
- Principal's Office
- Staffroom
- Uniform Shop
- Staff toilets- *located within the administration building and demountable buildings*
- Ramp for Disability Access
- Toilet Facilities- *including 2 accessible toilets (Demountable)*
- 1 Multipurpose hall (indoor space): The school will have an open space which is used for many activities. These include conducting the afternoon prayer, sports activities such as gymnastics, assemblies, and incursions. This includes a staging area, and an interactive screen to view media materials.
- School Canteen
- Local Computer network
- Wireless internet access

Stage 1A Sport and Recreational Facilities:

- Sheltered Courtyard
- Dedicated outdoor recreational areas, (grass area)
- Dedicated outdoor recreational area, (concrete)
- Multipurpose hall
- Indoor Library

- Local council parks/ playing fields

Management of Stage 1A construction works

- The expectation of all staff supervision requirements during all staged construction works will be identified within all staff policies and procedures.
- The expectations of students during stages of construction will be identified within all school rules, including the appropriate disciplinary action.
- The stage 2 construction area will be fenced off and marked as an exclusion zone to ensure the safety of students, staff and the general community.
- Any major demolition works will be planned, where possible, outside hours of school operation and/or during school holidays. *(All works will be completed during local council permissible hours).*
- Staff supervision will be available in all playground areas during recess and lunchtime to ensure the safety of students.
- Recess and Lunchtimes for Primary and Secondary students will be staggered to minimize activity on the playground during construction and to ensure the overall safety of staff and students.
- Staff supervision will be available before and after school to ensure the safety of student movement and assist in the flow and management of traffic; insuring minimal disturbances to residents.

STAGE 1A GROWTH PLAN

2024 Calendar Year

- School open to Year 4 students
- Estimated Construction of Stage 1A commences late 2024
- Estimated additional 50 students (150 students total- 6 *classes of 25 students*)
- Estimated 11 Staff (including operations and administration)
- OOSH (Outside School Hours Care) facilities for up to 40 students

2025 Calendar Year

- School open to Year 5 students
- Construction of Stage 1A continues and due for completion by the end of the year.
- Estimated additional 75 students (225 students total- 9 *classes of 25 students*)
- Estimated 15 Staff (including operations and administration)
- OOSH (Outside School Hours Care) facilities for up to 40 students

2026 Calendar Year

- School open to Year 6 students
- Primary School Building Ready for Occupation
- Estimated additional 75 students (300 students total- 12 *classes of 25 students*)
- Estimated 20 Staff (including operations and administration)
- OOSH (Outside School Hours Care) facilities for up to 40 students

2027 Calendar Year

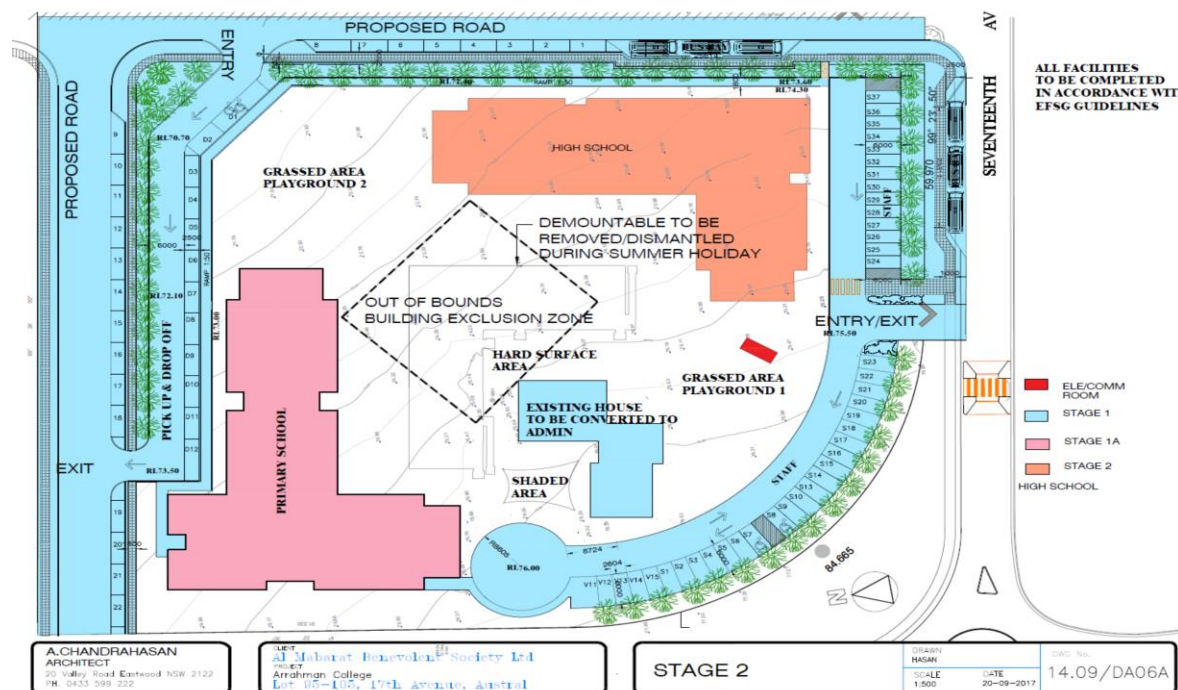
- **High School Operation Commences** (*Note: Primary School building will include facilities and resources to facilitate the requirements of the Secondary Curriculum*).
- Arrahman College is open to Year 7 students
- Estimated additional 75 students (375 students total- 15 classes of 25 students)
- Estimated 25 Staff (including operations and administration)
- OOSH (Outside School Hours Care) facilities for up to 40 students

2028 Calendar Year

- School open to Year 8 students
- Estimated additional 75 students (450 students total- 18 classes of 25 students)
- Estimated 30 Staff (including operations and administration)
- OOSH (Outside School Hours Care) facilities for up to 40 students
- Estimated Construction of Stage 2 commences late 2028

STAGE 2 CONSTRUCTION MANAGEMENT PLAN:

- Construction of a two-storey Secondary school building



Stage 2 Available Facilities:

The following facilities will be made available during stage 2 as per the Educational Facilities Standard Guidelines. Please note that all facilities must meet the appropriate level of standards for Arrahman College to maintain its school registration with the NESAs. Arrahman College will not be eligible for school registration by NESAs if the facilities available are in compliance with the relevant education building standards.

The currently proposed facilities will meet NESA's expectations as well as the requirements of the Educational Facilities Standard Guidelines, EFSG.

- All of the Stage 1A facilities will remain until the completion of Stage 2.
- Permanent Secondary Building- The Secondary building will include;
 - 15 general-purpose classrooms
 - 4 Science and Technology Labs
 - 3 ICT Labs - *The ICT lab will also provide students with access to STEM technologies*
 - 1 Food Technology Lab
 - 1 Industrial Technology Lab
 - Staffroom and additional Staff Office Space
 - 1 Drama Room
 - 1 Music Lab
 - General Storeroom
 - Wheelchair accessible ramps
 - Lifts
 - Student Toilets, *including accessible toilets.*
- Permanent Primary Building- The primary building will include;
 - 19 general-purpose classrooms
 - An Early Years learning Library
 - 2 Science and Technology Labs
 - 3 ICT Labs - *The ICT lab will also provide students with access to digital technologies such as Bee bots and Edu bots.*
 - 4 Multi-purpose rooms (Maker Space)
 - Staffroom and additional Staff Office Space
 - 1 Visual Arts Lab
 - 1 Music Lab
 - General Storeroom
 - Wheelchair accessible ramps
 - Lifts
 - Student Toilets, *including accessible toilets.*
- College Library- The Primary School library will contain modern seating which encourages private reading and small group activities related to the library.
- 7 general demountable classrooms: All classrooms will be fitted with educational features to facilitate teaching and learning activities. These include a whiteboard and an interactive

whiteboard in each classroom. Each room will have seating for 30 students, a teacher desk, bookshelves, and work tray holders for each student in the class.

- **The demountables may be used as general classrooms and/or additional learning spaces e.g. specialty lab, learning support, conversion into a larger library area, or used as a general meeting area/ indoor open space learning.**
- Counsellors Office (Shared): The College will include one specially designated space for students to visit the counsellor and participate in one on one activities. This space will not be shared whilst the counsellor is in consultation with students.
- Administration Office with Sick Bay Facilities
- A server/Photocopy room
- Principal's Office
- Staffroom
- Uniform Shop
- Staff toilets- *located within the administration building and demountable buildings*
- Ramp for Disability Access
- Toilet Facilities- *including 2 accessible toilets (Demountable)*
- 1 Multipurpose hall (indoor space): The school will have an open space which is used for many activities. These include conducting the afternoon prayer, sports activities such as gymnastics, assemblies, and incursions. This includes a staging area, and an interactive screen to view media materials.
- School Canteen
- Local Computer network
- Wireless internet access

Stage 2 Sport and Recreational Facilities:

- Sheltered Courtyard
- Dedicated outdoor recreational areas, (grass area)
- Dedicated outdoor recreational area, (concrete)
- Multipurpose hall
- Indoor Library
- Local council parks/ playing fields

Management of Stage 2 construction works

- The expectation of all staff supervision requirements during all staged construction works will be identified within all staff policies and procedures.
- The expectations of students during stages of construction will be identified within all school rules, including the appropriate disciplinary action.
- The stage 3 construction area will be fenced off and marked as an exclusion zone to ensure the safety of students, staff and the general community.
- Any major demolition works will be planned, where possible, outside hours of school operation and/or during school holidays. *(All works will be completed during local council permissible hours).*
- Staff supervision will be available in all playground areas during recess and lunchtime to ensure the safety of students.
- Recess and Lunchtimes for Primary and Secondary students will be staggered to minimize activity on the playground during construction and to ensure the overall safety of staff and students.
- Staff supervision will be available before and after school to ensure the safety of student movement and assist in the flow and management of traffic; insuring minimal disturbances to residents.

STAGE 2 GROWTH PLAN

2029 Calendar Year

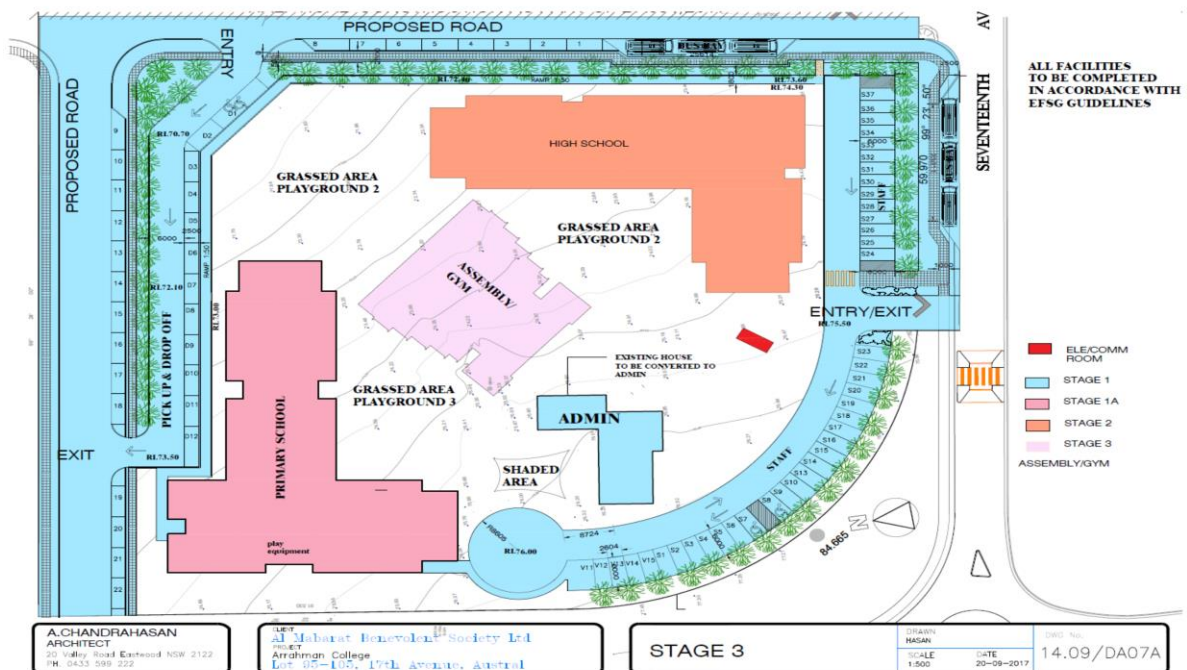
- School open to Year 9 students
- Estimated additional 75 students (525 students total- *21 classes of 25 students*)
- Estimated 33 Staff (including operations and administration)
- Construction of Stage 2 is complete by the end of the year.
- OOSH (Outside School Hours Care) facilities for up to 40 students

2030 Calendar Year

- School open to Year 10 students
- Secondary School Building in Operation
- Estimated additional 75 students (600 students total- 24 classes of 25 students)
- Estimated 36 Staff (including operations and administration)
- OOSH (Outside School Hours Care) facilities for up to 40 students
- Estimated Construction of Stage 3 commences late 2030
- **Demountable buildings are decommissioned in late 2030 during the summer school holidays.**

STAGE 3 CONSTRUCTION MANAGEMENT PLAN:

- Construction of School Assembly and Gymnasium



Stage 3 Available Facilities:

The following facilities will be made available during stage 3 as per the Educational Facilities Standard Guidelines. Please note that all facilities must meet the appropriate level of standards for Arrahman College to maintain its school registration with the NESA. Arrahman College will not be eligible for school registration by NESA if the facilities available are incompliant with the relevant education building standards.

The currently proposed facilities will meet NESA's expectations as well as the requirements of the Educational Facilities Standard Guidelines, EFSG.

- All of the Stage 2 facilities will remain until the completion of Stage 3.
- Permanent Assembly/ Gymnasium- The Assembly/ Gymnasium will include;
 - Performance staging area
 - Audio room
 - Student Toilets, *including accessible toilets.*
 - Multipurpose indoor sports court
 - Kitchen
 - Permanent School Canteen
 - 2 general storage rooms
 - Cleaners storage area
- Permanent Secondary Building- The Secondary building will include;
 - 15 general-purpose classrooms
 - 4 Science and Technology Labs
 - 3 ICT Labs - *The ICT lab will also provide students with access to STEM technologies*
 - 1 Food Technology Lab
 - 1 Industrial Technology Lab
 - Staffroom and additional Staff Office Space
 - 1 Drama Room
 - 1 Music Lab
 - General Storeroom
 - Wheelchair accessible ramps
 - Lifts
 - Student Toilets, *including accessible toilets.*
- Permanent Primary Building- The primary building will include;
 - 19 general-purpose classrooms
 - An Early Years learning Library
 - 2 Science and Technology Labs
 - 3 ICT Labs - *The ICT lab will also provide students with access to digital technologies such as Bee bots and Edu bots.*
 - 4 Multi-purpose rooms (Maker Space)
 - Staffroom and additional Staff Office Space
 - 1 Visual Arts Lab
 - 1 Music Lab
 - General Storeroom
 - Wheelchair accessible ramps
 - Lifts

- Student Toilets, *including accessible toilets.*
- College Library- The Primary School library will contain modern seating which encourages private reading and small group activities related to the library.
- Counsellors Office (Shared): The College will include one specially designated space for students to visit the counsellor and participate in one on one activities. This space will not be shared whilst the counsellor is in consultation with students.
- Administration Office with Sick Bay Facilities
- A server/Photocopy room
- Principal's Office
- Staffroom
- Uniform Shop
- Staff toilets- *located within the administration building and demountable buildings*
- Ramp for Disability Access
- Toilet Facilities- *including 2 accessible toilets (Demountable)*
- 1 Multipurpose hall (indoor space): The school will have an open space which is used for many activities. These include conducting the afternoon prayer, sports activities such as gymnastics, assemblies, and incursions. This includes a staging area, and an interactive screen to view media materials.
- Local Computer network
- Wireless internet access

Stage 3 Sport and Recreational Facilities:

- Sheltered Courtyard
- Dedicated outdoor recreational areas, (grass area)
- Dedicated outdoor recreational area, (concrete)
- Multipurpose hall (K-2)

- Indoor sports Gymnasium
- Indoor Library
- Local council parks/ playing fields

Management of Stage 3 construction works and decommissioning of the demountable buildings

- The expectation of all staff supervision requirements during all staged construction works will be identified within all staff policies and procedures.
- The expectations of students during stages of construction will be identified within all school rules, including the appropriate disciplinary action.
- **Any major demolition works, including the dismantling of the demountable buildings, will be completed outside hours of school operation and/or during school holidays. (*All works will be completed during local council permissible hours*).**
- **A demolition plan will be provided, as required, as per the conditions of consent.**
- **Once the demountables have been decommissioned, the stage 4 construction area will be fenced off and marked as an exclusion zone to ensure the safety of students, staff and the general community.**
- Staff supervision will be available in all playground areas during recess and lunchtime to ensure the safety of students.
- Recess and Lunchtimes for Primary and Secondary students will be staggered to minimize activity on the playground during construction and to ensure the overall safety of staff and students.
- Staff supervision will be available before and after school to ensure the safety of student movement and assist in the flow and management of traffic; insuring minimal disturbances to residents.

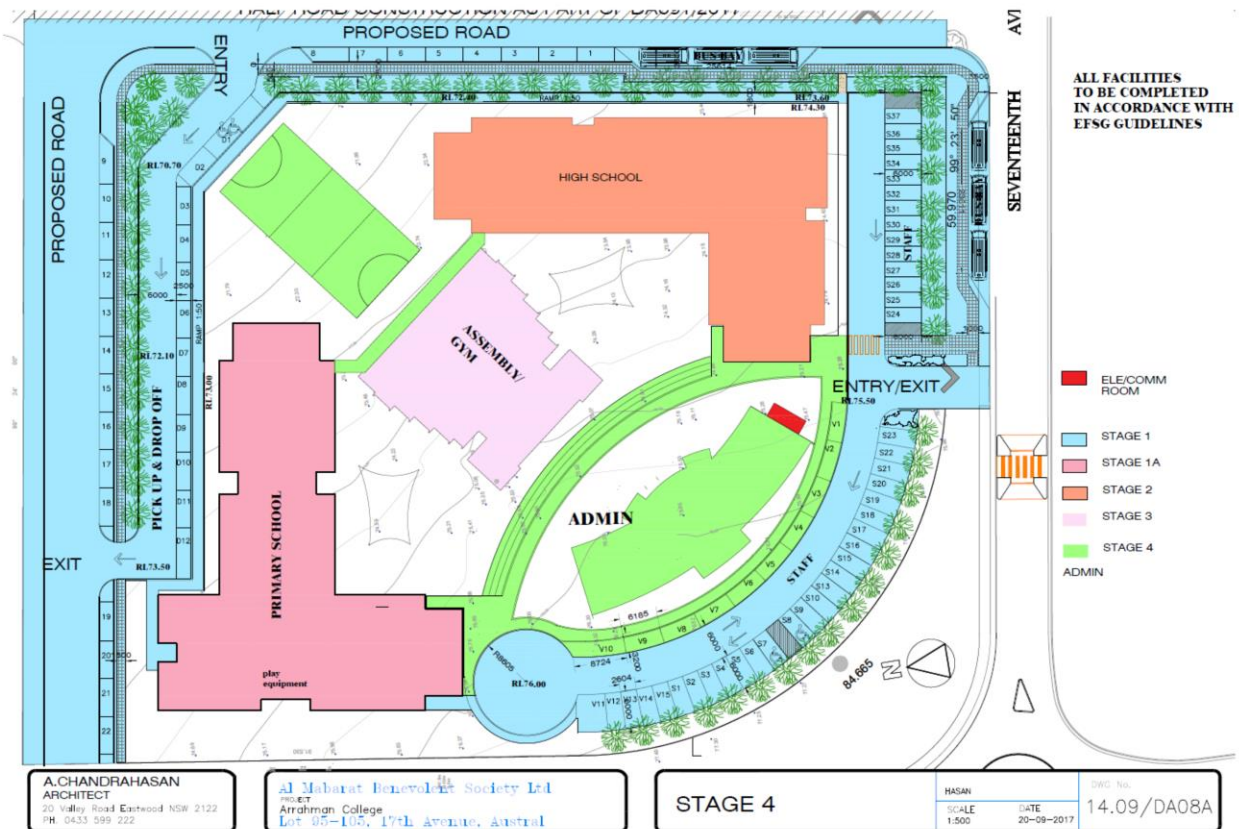
STAGE 3 GROWTH PLAN

2031 Calendar Year

- School open to Year 11 students
- Estimated additional 75 students (*675 students total- 27 classes of 25 students*)
- Estimated 39 Staff (including operations and administration)
- OOSH (Outside School Hours Care) facilities for up to 40 students
- Estimated Construction of Stage 3 is complete late 2031
- Estimated Construction of Stage 4 commences late 2031

STAGE 4 CONSTRUCTION MANAGEMENT PLAN:

- Construction of School Administration Building
- Construction of internal school walkways



Stage 4 Available Facilities:

The following facilities will be made available during stage 4 as per the Educational Facilities Standard Guidelines. Please note that all facilities must meet the appropriate level of standards for Arrahman College to maintain its school registration with the NESA. Arrahman College will not be eligible for school registration by NESA if the facilities available are incompliant with the relevant education building standards.

The currently proposed facilities will meet NESA's expectations as well as the requirements of the Educational Facilities Standard Guidelines, EFSG.

- All of the Stage 3 facilities will remain until the completion of Stage 4. (*The administration office, uniform shop, and staffrooms will be temporarily located within the Primary and Secondary building during the construction of stage 4*).
- Permanent Administration Building- The Administration building will include;

- Main School Library
 - Main School foyer
 - Main reception area
 - 1 ICT Lab
 - Staff Toilets, *including accessible toilets*
 - Security office/ control room
 - Wheelchair accessible ramp
 - Lifts
 - Student Toilets, *including accessible toilets.*
 - Staff Kitchen
 - First Aid Room
 - Unifrom Shop
 - Boardroom
 - 7 dedicated office rooms
 - Photocopy room
 - Dedicated male prayer area/ open learning space
 - Dedicated female prayer area/ open learning space
- Permanent Assembly/ Gymnasium- The Assembly/ Gymnasium building will include;
 - Performance staging area
 - Audio room
 - Student Toilets, *including accessible toilets.*
 - Multipurpose indoor sports court
 - College Kitchen (*Special College Events*)
 - Permanent School Canteen
 - 2 general storage rooms
 - Cleaners storage area
- Permanent Secondary Building- The Secondary building will include;
 - 15 general-purpose classrooms
 - 4 Science and Technology Labs
 - 3 ICT Labs - *The ICT lab will also provide students with access to STEM technologies*
 - 1 Food Technology Lab
 - 1 Industrial Technology Lab
 - Staffroom and additional staff office space
 - 1 Drama room
 - 1 Music lab
 - General storeroom
 - Wheelchair accessible ramps

- Lifts
- Student Toilets, *including accessible toilets.*
- Permanent Primary Building- The primary building will include;
 - 19 general-purpose classrooms
 - An Early Years learning Library
 - 2 Science and Technology Labs
 - 3 ICT Labs - *The ICT lab will also provide students with access to digital technologies such as Bee bots and Edu bots.*
 - 4 Multi-purpose rooms (Maker Space)
 - Staffroom and additional staff office space
 - 1 Visual Arts Lab
 - 1 Music ab
 - General storeroom
 - Wheelchair accessible ramps
 - Lifts
 - Student Toilets, *including accessible toilets.*
- Administration Office with Sick Bay Facilities - *Temporarily located in the Secondary Building during stage 4 construction*
- Staffroom Primary- *Temporarily located in the Primary Building during stage 4 construction*
- Staffroom Secondary- *Temporarily located in the Secondary Building during stage 4 construction*
- Uniform Shop- *Temporarily located in the Primary Building during stage 4 construction*
- Staff toilets- *The toilets in the gymnasium building will be temporarily used as staff toilets. Students will be prohibited from using these toilets during stage 4 construction.*
- Ramp for Disability Access
- Local Computer network
- Wireless internet access

Stage 4 Sport and Recreational Facilities:

- Sheltered Courtyard
- Dedicated outdoor recreational areas, (grass area)
- Dedicated outdoor recreational area, (concrete)
- Indoor sports Gymnasium & Indoor Library
- Local council parks/ playing fields

Management of Stage 4 construction works and decommissioning of the demountable buildings

- The expectation of all staff supervision requirements during all staged construction works will be identified within all staff policies and procedures.
- The expectations of students during stages of construction will be identified within all school rules, including the appropriate disciplinary action.
- **Any major demolition works will be completed outside hours of school operation and/or during school holidays. (*All works will be completed during local council permissible hours*).**
- **The stage 4 construction area will be fenced off and labelled as an exclusion zone to ensure the safety of students, staff and the general community.**
- Staff supervision will be available in all playground areas during recess and lunchtime to ensure the safety of students.
- Recess and Lunchtimes for Primary and Secondary students will be staggered to minimize activity on the playground during construction and to ensure the overall safety of staff and students.
- Staff supervision will be available before and after school to ensure the safety of student movement and assist in the flow and management of traffic; insuring minimal disturbances to residents.

STAGE 4 GROWTH PLAN

2032 Calendar Year

- School open to Year 12 students
- Assembly/ Gymnasium in Operation
- Estimated additional 75 students (750 students total- *30 classes of 25 students*)
- Estimated 42 Staff (including operations and administration)
- OOSH (Outside School Hours Care) facilities for up to 40 students
- Construction of Stage 4 due for completion by the end of 2032

2033 Calendar Year

- New School Administration Building in Operation
- Estimated additional 50 students (800 students total- *32 classes of 25 students*)
- Estimated 45 Staff (including operations and administration)
- OOSH (Outside School Hours Care) facilities for up to 40 students
- **SCHOOL REACHES THE PROPOSED MAXIMUM CAPACITY OF 800 STUDENTS**

Sample Primary College Timetable:

Time	Monday	Tuesday	Wednesday	Thursday	Friday
8.45					Assembly (8.50-9.20)
8.50-9.00	Dear	Dew	Dear	Dew	Assembly (Dear)
9.00-9.30	Spelling	Spelling	Speaking and listening	Maths (9.00-9.20)	Spelling
9.30-10.00	Computers	Language	Shared reading	Sports(9.20-10.10)	Shared reading
10.00-10.30	Computers	Writing	Shared reading	Sports(9.20-10.10) PE (10.10-10.30)	Maths
10.30-11.00	Quran	Writing	Quran	Maths (10.30-11.00)	Maths
11.00-11.15	Recess	Recess	Recess	Recess	Recess
11.15-11.45	Quran	Arabic	Quran	Arabic	Quran
11.45-12.15	Language	Arabic	science	Arabic	Arabic
12.15-12.45	Maths	Maths	Maths	PDH	Maths
12.45-1.15	Maths	Maths	Maths	Writing	Creative Arts
1.15-2.00	Lunch				
2.00-2.30	History	Science	Library	Writing	Creative Arts
2.30-3.00	History	Science	Library	History	Creative Arts
3.00-3.20	PE	PE	PE	History	PE

English	Maths	Science/Tech	PDH/PE	History	Creative Arts	AQIS
7 hrs 50mins	5h 20mins	2h 30 mins	3h	1.50 mins	1.5h	5h

Proposed Primary College Class Composition:

- Kindergarten x 2-3 Classes (*Includes 1x Accelerated Class*)
- Year 1 x 2-3 Classes (*includes 1x Accelerated Class*)
- Year 2 x 2-3 Classes (*includes 1x Accelerated Class*)
- Year 3 x 2-3 Classes (*includes 1x Accelerated Class*)
- Year 4 x 2-3 Classes (*includes 1x Accelerated Class*)
- Year 5 x 2-3 Classes (*includes 1x Accelerated Class*)
- Year 6 x 2-3 Classes (*includes 1x Accelerated Class*)

Class total: 14-21

**Approx. 25 students per class.*

Approx. 420 Total Primary Students

School Capacity: Maximum 800 Students

Sample Secondary Timetable:

	MONDAY	TUESDAY	WEDNESDAY	THURSDAY	FRIDAY
Period 1	8.30am – 9.30am TECH 8B1 TECH BOYS COMP LAB		8.30am – 9.30am TECH 7B2 TECH BOYS COMP LAB	8.30am – 9.30am IPT 11B2 BOYS COMP LAB	8.30am – 9.30am TECH 8B2 TECH BOYS COMP LAB
Period 2		9.30am -10.30am TECH 8B2 TECH BOYS COMP LAB	9.30am -10.30am TECH 7B2 TECH BOYS COMP LAB	9.30am -10.30am TECH 8 BOYS 1 BOYS COMP LAB	9.30am -10.30am TECH 7B3 TECH BOYS COMP LAB
RECESS	10.30am – 10.45am	10.30am – 10.45am	10.30am – 10.45am	10.30am – 10.45am	10.30am – 10.45am
Period 3	10.45am – 11.45am TECH 7 BOYS 4 BOYS COMP LAB	10.45am – 11.45am TECH 7B1 TECH BOYS COMP LAB		10.45am – 11.45am TECH 8B3 TECH BOYS COMP LAB	10.45am – 11.45am TECH 8B1 TECH BOYS COMP LAB
Period 4	11.45am – 12.45pm TECH 8B3 TECH BOYS COMP LAB	11.45am – 12.45pm IPT 11B2 BOYS COMP LAB	11.45am – 12.45pm TECH 7B3 TECH BOYS COMP LAB		
LUNCH	12.45pm – 1.30pm	12.45pm – 1.30pm	12.45pm – 1.30pm	12.45pm – 1.30pm	12.45pm – 1.30pm FRIDAY PRAYER
Period 5	1.30pm – 2.30pm IPT 11B2 BOYS COMP LAB	1.30pm – 2.30pm TECH 8 BOYS 2 BOYS COMP LAB		1.30pm – 2.30pm TECH 7B1 TECH BOYS COMP LAB	
Period 6	2.30pm – 3.30pm TECH 8 BOYS 2 BOYS COMP LAB	2.30pm – 3.30pm TECH 8 BOYS 1 BOYS COMP LAB			2.30pm – 3.30pm IPT 11B2 BOYS COMP LAB

Secondary College Class Composition:

- Year 7 x 2-3 Classes (*includes 1x Accelerated Class*)
- Year 8 x 2-3 Classes (*includes 1x Accelerated Class*)
- Year 9 x 2-3 Classes (*includes 1x Accelerated Class*)
- Year 10 x 2-3 Classes (*includes 1x Accelerated Class*)
- Year 11 x 3 Classes (*includes 1x Accelerated Class*)
- Year 12 x 3 Classes (*includes 1x Accelerated Class*)

Class total: 14-18

**Approx. 25 students per class.*

Approx. 360 Total Secondary Students

School Capacity: Maximum 800 Students

Management of Student Movement

STRATEGY TO ADDRESS	MEANS OF ACHIEVEMENT	RESPONSIBILITY	PERFORMANCE MEASURE
Students Movement Before School	<ul style="list-style-type: none"> - Implement policies that will ensure the efficient and safe movement of students around the college - Implement prohibited access areas to ensure the overall safety of the students and the local community 	<ul style="list-style-type: none"> - College Teaching Staff - Support Staff - College Security - College Crossing Supervisor 	<ul style="list-style-type: none"> - Adopted college policies - Minimal disruption to the local community - No Complaints by locals' residents - Easy flow traffic - Statutory compliance - Parents following local traffic condition rules and regulations
Student Movement During Recess and Lunch Breaks	<ul style="list-style-type: none"> - Restrict access close to college boundaries - Stage all break times to minimise disruption and student numbers on the playground at any one given time - Allocate staff to playground duty in all sections of the college - Allocate age-based play areas to limit noise disruption and ensure the safety of the students 	<ul style="list-style-type: none"> - College Teaching Staff - Support Staff - College Security 	<ul style="list-style-type: none"> - Adopted college policies - Minimal disruption to the local community
Student Movement After School	<ul style="list-style-type: none"> - Implement policies that will ensure the efficient and safe movement of students around the college - Implement prohibited access areas to ensure the overall safety of the students and the local community - Stage all bell times for Primary and Secondary students to assist in the management and flow of 	<ul style="list-style-type: none"> - College Teaching Staff - Support Staff - College Security - College Crossing Supervisor 	<ul style="list-style-type: none"> - Adopted college policies - Minimal disruption to the local community - No Complaints by locals' residents - Easy flow traffic - Statutory compliance - Parents following local traffic condition rules and regulations

Student Movement During Weekend Classes	<ul style="list-style-type: none"> - Implement policies that will ensure the efficient and safe movement of students around the college - Implement prohibited access areas to ensure the overall safety of the students and the local community - Staff to liaise with Management regarding student movement and performance. 	<ul style="list-style-type: none"> - Contract Teaching Staff - Contract Management - Contract Support Staff - College Security 	<ul style="list-style-type: none"> - Adopted college policies - Minimal disruption to the local community - No Complaints by locals' residents. - community - Student performance evaluation.
Student Movement During Special Events And Extra-Curricular Activities	<ul style="list-style-type: none"> - Implement policies that will ensure the efficient and safe movement of students around the college - Implement prohibited access areas to ensure the overall safety of the students and the local community - Staff to liaise with Management regarding student movement and performance 	<ul style="list-style-type: none"> - College Teaching Staff - Support Staff - Parent/ Carer Volunteers 	<ul style="list-style-type: none"> - Adopted college policies - Excursion Safety Assessment - Student Performance evaluation
Student Movement During College Construction, Renovation and/or Upgrades	<ul style="list-style-type: none"> - Implement policies that will ensure the efficient and safe movement of students around the college - Implement prohibited access areas/ exclusion zone to ensure the overall safety of the students and the local community - Secure the construction area. - Staff to liaise with Management regarding student movement and performance. 	<ul style="list-style-type: none"> - College Teaching Staff - Support Staff - College Security - College Executive Staff - Building Management Team 	<ul style="list-style-type: none"> - Adopted college policies - No disruption to the local community - Student performance evaluation. - No injuries relating to College construction and/or upgrades

Management of College Construction, Renovations and/or Upgrades

As a new establishment, Arrahman College will require regular construction, maintenance, repairs and upgrades. The College recognizes that during these circumstances potential hazards may arise posing a risk to staff and students. Arrahman College has necessary policies, procedures and practices in place to minimize the potential risks that may arise during construction, maintenance, repairs and upgrades.

These may include:

1. Setting up prohibited exclusion zones around all areas of construction, including areas undergoing general maintenance and repairs.
2. Utilise safety signage throughout the college
3. Temporarily relocating classrooms, if required, to suitable safety areas until the work has been completed.
4. Placing additional staff on supervision duties during college break times, including before and after school.
5. Implementing rigorous school policies and procedures for students and staff
6. Providing staff with clear supervision guidelines and instructions
7. Sending parents regular updates regarding the progress of the building works which includes reminders of child safety practices.